

HT3 MOBILE



The power of SCADA in your hand

- ★ Utilize Any Carrier's Smartphone
- ★ Control in the Palm of Your Hand
- ★ View and Acknowledge Alarms
- ★ Run Data Trends and Reports
- ★ Secure Login and Session Timeout
- ★ Wi-Fi and Cellular Connectivity

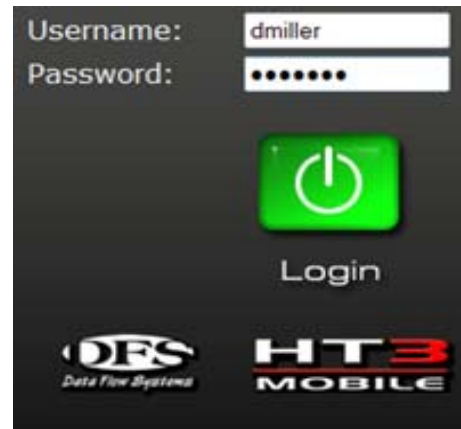
Customers have long wanted to access their system when on the go, but often the use of a portable computer is not practical. With the emergence of wireless networking, mobile Internet devices and smart phones that can browse the Internet, today's technology makes that possible..

The HT3 Mobile product is somewhat a streamlined version of our HT3 SCADA Software optimized for today's smart phones and Wi-Fi devices. In HT3 Mobile users will find the essential tools needed for working in the plant, field and office. The features provided in the HT3 Mobile product are:

- User Login
- Navigation Menu
- Alarm Viewer
- System Statistics
- Text Screens
- Custom Graphical Screens
- Trend Viewer
- Standard Reports
- Mobile Online Help

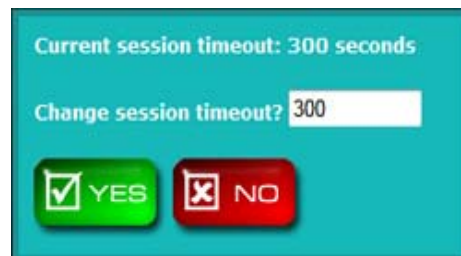
User Login:

HT3 Mobile is password protected to prevent unauthorized users from accessing the system. The user account for HT3 Mobile is the same as the one you use to login to HT3 SCADA Software. The same permissions that are set for the user account in HT3 SCADA Software also apply to HT3 Mobile.



Session Timeout:

Session timeout is the maximum length of time HT3 Mobile will stay logged in if there is no activity. If HT3 Mobile runs without any activity for the period configured for session timeout, you will have to log in again. When you log back in, you will be returned to the page that previously timed out.



Navigation Menu:

HT3 Mobile features a Navigation Menu for easy touch access to the menu options. From the Navigation Menu a mobile user can select Screens, Alarms, Stations, Trends, Help, Options (refresh rate), Reports, System Statistics, and the Logout command.

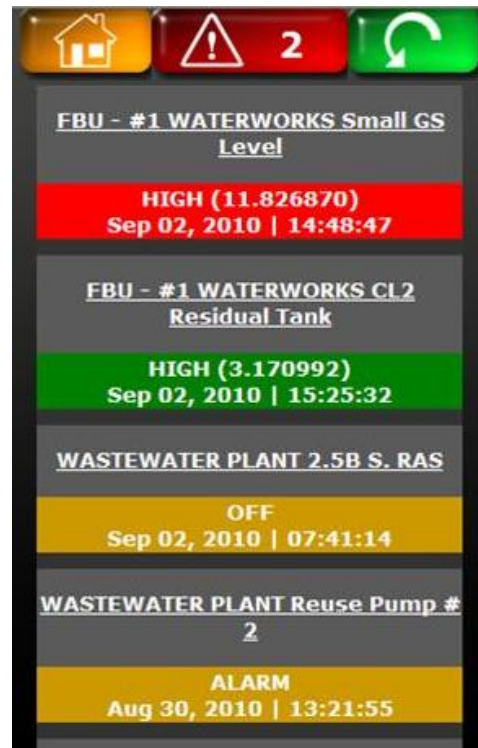


Alarm Viewer:

Perhaps the most important information a user needs are the alarm conditions that occur in their system. Once notified by the system's "911" alarm dial-out, the smart phone, mobile Internet device, or Wi-Fi device can be used to log into HT3 Mobile.

Once there, a user can acknowledge the alarm and then investigate the cause and effect of the alarm.

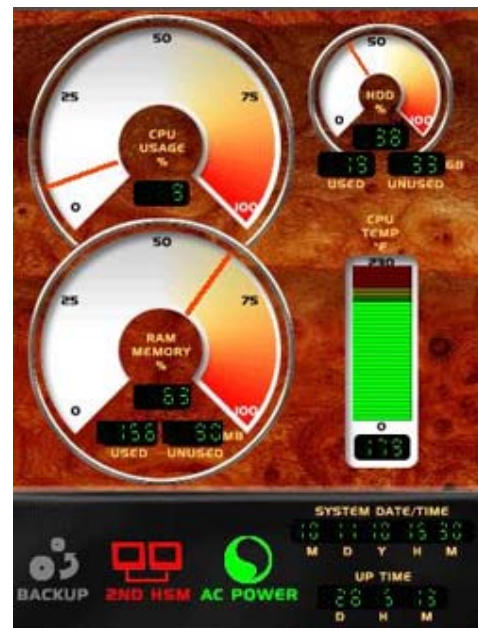
As shown in this image, the active alarm indicator is displayed at the top (middle) of every screen in HT3 Mobile. In this example, there are "2" active alarms.



System Statistics:

A System Statistics dashboard, similar to the one included in HT3 SCADA Software, is available in HT3 Mobile.

This screen displays information on the current status of important system-level points, including Hyper SCADA Server's (HSS) AC power and battery voltage, active Hyper Server Module (HSM) CPU usage, and length of time active HSM has been running since its last reboot.



Text Screens:

The Text Screen displays a station's point names and status in a basic text format. The control points, as shown in this example, are initiated with the touch of a button.

HT3 Mobile does feature a two-step control process, with the second step being a confirmation of the control command.

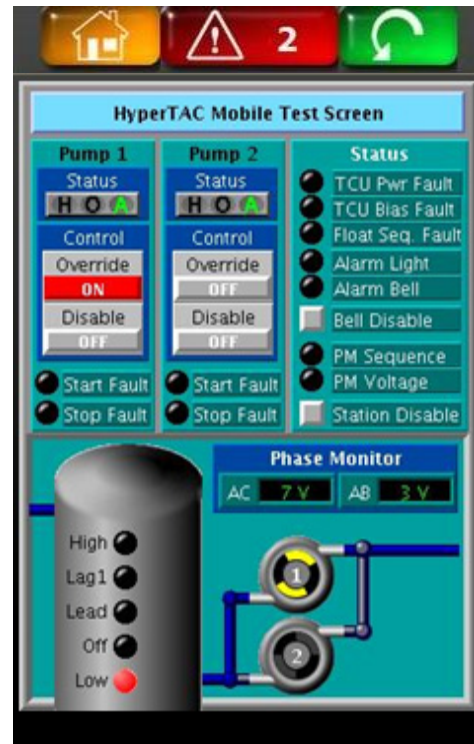


Custom Graphical Screens:

Custom graphical screens have been the most popular feature in HyperTAC SCADA Software. Although custom screens have required the support of the Java run-time environment on the device, HT3 Mobile has eliminated that requirement.

The HT3 SCADA Software includes Custom Screen Builder software, which is used to build custom screens that can be managed with the smaller mobile device displays.

Any existing custom screen can be displayed, but those created specifically for a small screen work best. The screen image shown was created specifically for HT3 Mobile.



Trend Viewer:

Trends in HT3 Mobile are fast and easy to navigate. Saved trends are accessed through the menu, and the trend for any individual point is one click away.

Smart phones that feature a landscape view when turned on its side provide a larger viewing area as shown in this image.



Standard Reports:

HT3 SCADA Software's Standard reports can be run from HT3 Mobile. Reports include Analog, Derived Flow, Detail, Min Max Average, Pulse, Pump Activity, and Snapshot.

Activity Report

PUMP Report

From 00:00 10/10/10 To 00:00 10/10/10 Time Filter 00:00 - 24:00

October 10, 2010

Point Name	Address	Min Ontime	Max Ontime	Total Ontime	Avg Ontime	Times On
Symphony TCU 11						
Any Pump	3011A11	00:01:23	00:08:04	10:09:25	00:03:32	172
Symphony TCU 12						
Any Pump	3012A11	00:00:50	01:42:46	13:00:14	00:26:09	25
Symphony TCU 13						
Any Pump	3013A11	00:04:52	00:10:45	05:49:50	00:06:43	52
Symphony TCU 14						
Any Pump	3014A11	00:01:55	00:18:11	05:36:49	00:04:22	77
Symphony PCU 17						
Any Pump	3017A43	00:02:28	00:07:58	10:08:19	00:04:13	143

End of Report

HT3 Mobile Online Help:

All of the help files required to use HT3 Mobile are accessible in the field on the device being used.

HT3 Mobile Help

<< Prev Next >>

Alarms

The alarms page is sorted first by their color coded alarm level (see legend below) and then by the time the alarm occurred (most recent alarms are listed first).

Alarm level color codes:

- Red - active and unacknowledged
- Green - cleared and

Refresh Rate:

From the Options menu you can adjust the screen refresh rate. More options for customizing HT3 Mobile will be added in the near future.



Wi-Fi Access:

HT3 Mobile can be used with Wi-Fi enabled devices. This may be more practical for in-plant operations or where cell coverage is cost prohibitive. Systems using a Wi-Fi internal network access must establish a Wi-Fi access point that's accessible by the HSS.



Internet Access (Smart Phone):

Systems using the Internet for HT3 Mobile access must provide constant Internet access that allows incoming connections with a static IP address; not "on demand" like DSL or Dialup (e.g., cable internet service that has a static IP option for business).



Pricing:

HT3 Mobile is now provided at no-charge with all Hyper SCADA Server (HSS) products and includes an unlimited number of user licenses (Wi-Fi, phone access). The Wi-Fi devices, phone(s), Internet connection, secured router and required port/IP settings, are the responsibility of the Utility/end-user.

Should you have any questions or require additional information, please don't hesitate to contact DFS Sales at 321-259-5009 / sales@dataflowsys.com, or your local DFS Representative.